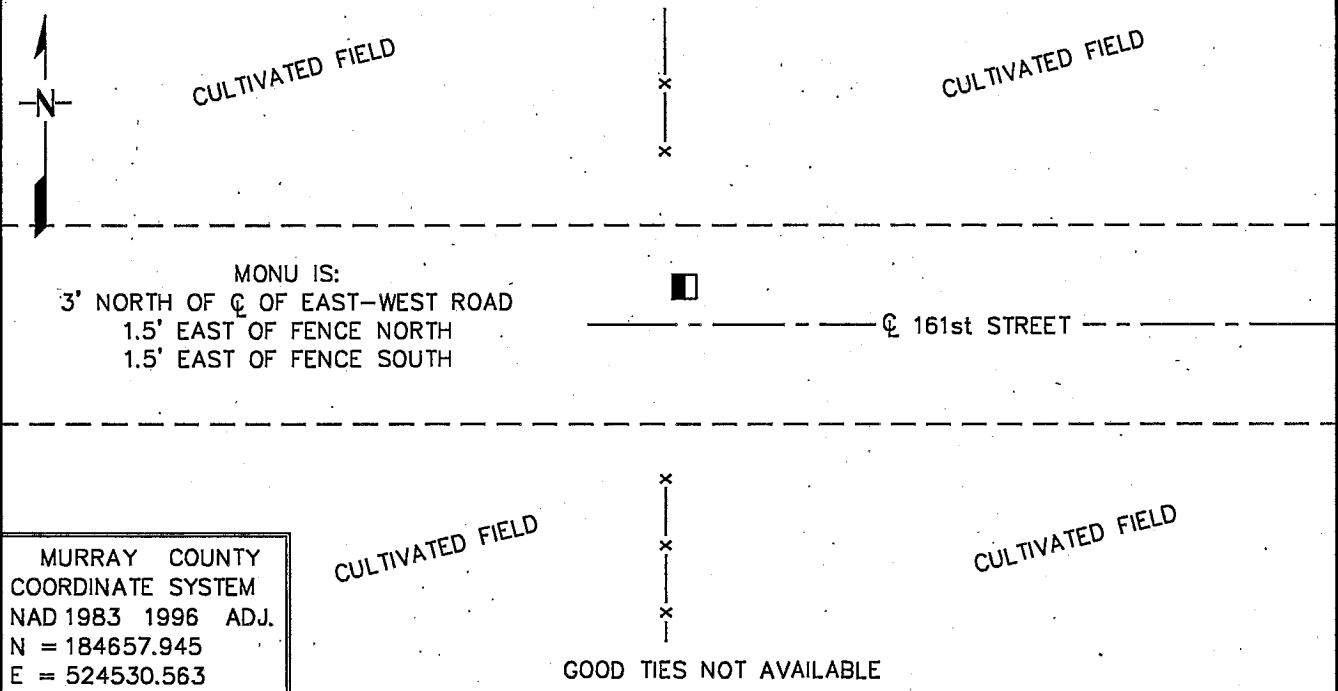


# CERTIFICATE OF LOCATION OF GOVERNMENT CORNER

NORTH QUARTER Corner of Section 17, Township 107 N, Range 40 W  
5th Principal Meridian, State of Minnesota, County of MURRAY

At the corner location shown on the sketch:

- On 10/13/09 found a 1" SQUARE IRON, DOWN 26"  
DATE
- left monument as found,     lowered monument,     removed monument (explain)
- On 10/13/09 Placed a 3/4" X 12" REBAR WITH PLASTIC CAP STAMPED  
DATE  
"MN DNR LS 17003", DOWN 0.4' OVER FOUND IRON



MURRAY COUNTY  
COORDINATE SYSTEM  
NAD 1983 1996 ADJ.  
N = 184657.945  
E = 524530.563

Statement of evidence for this corner location is on back of this page.

11/02/09  
WMA01426.00.00.01

I certify that this document was researched and prepared by me or under my direct supervision.

SIGNATURE Russ W. Skyped DATE 11/04/09 License Number 17003

Title:     Land Surveyor     Professional Engineer     County Surveyor     County Engineer

The DNR Division of Lands and Minerals contacted the following for survey information:

Minnesota History Center in St. Paul  
Murray County Recorder's Office  
Murray County Highway Engineer's Office  
Bueltel-Moseng Land Surveying of Marshall  
Zieske Land Surveying, Inc. of Windom  
Madsen Land Surveying, Inc. of Fairmont  
Bonnema Surveys of Willmar

1861 U.S. General Land Office notes, obtained from the Minnesota History Center, show the corner as follows:

“Set  $\frac{1}{4}$  Sec Cor P & M “

No Surveyor's Record Book A, Page 28, obtained from the County Recorder's Office,  
Date Office, contains a survey in Section 8, surveyor not indicated. Survey states:

“surveyed road from south quarter stake of Sec 8, Town 107, Range 40, north to center of section, thence west to west quarter stake of said section, thence west to outlet of Lake Shetek”

The following is also noted about the south quarter corner of Section 8, which is in different writing than the above and most likely was added at a later date:

iron stake, fence corner 33 feet north and 33 feet south on line

No distances from other government corners or the center of Section 8 are shown.

No Surveyor's Record Book, obtained from the County Highway Engineer's  
Date Office, contains a survey in the Section 17, surveyor not indicated. Survey shows corner but a description of what kind of monument was found or set is not given and no distances are shown to it.

On April 3, 1935, the following note about the north  $\frac{1}{6}$  corner of the NW  $\frac{1}{4}$  of Section 17 was added:

“found iron stake placed concrete stone, tack in brace post, northeast 39.85 feet”

No distances are show to the  $\frac{1}{16}$  corner.

No Murray County Highway Department section corner information website, states that  
Date an iron stake was placed at the corner. The following ties are shown to the corner:  
fence corner 33 feet north and 33 feet south on line

1973 April 26, the DNR Bureau of Engineering conducted a survey in the NW  $\frac{1}{4}$  of Section 18 and assumed a position for this corner as follows:

in center line of an east-west road and in line with fences north and south

A description of what kind of monument was set to mark the location of the corner is not given. The corner is shown:

2674.89 feet from the northeast corner of Section 17

2005 December 28, a Certificate of Survey in the SW  $\frac{1}{4}$  of the NE  $\frac{1}{4}$  of Section 8, signed by Perry L. Zieske, LS 23008, obtained from Zieske Land Surveying, Inc., states that an iron monument was found in place below the surface at the south quarter corner of Section 8. The corner is shown:

5303.96 feet from the north quarter corner of Section 8

2005 December 30, a Certificate of Location of Government Corner for the Center of Section 8, signed by Perry L. Zieske, LS 23008, obtained from Zieske Land Surveying, Inc., shows a symbol for the south quarter of Section 8 but a description of what kind of monument was found or set is not given. The south quarter corner of Section 8 is shown:

5303.96 feet from the north quarter corner of Section 8

2652.08 feet from the center of Section 8

2009 October 13, the DNR Division of Lands and Minerals dug in the area of the corner with a backhoe and found a 1 inch square iron, down 26 inches, with a rounded top field stone on its north side. During the excavation natural ground was encountered at a depth of 24 inches. The 1 inch square iron was found to be:

3 feet north of the center line of an east-west road

1.5 feet east of a fence south

1.5 feet east of a fence north

Also, dug a 12 foot east-west by 7 foot north-south by 2.5 deep hole (natural ground at a depth of 1 foot) with the backhoe in the area of the north  $\frac{1}{6}$  corner of the NW  $\frac{1}{4}$  of Section 17 in search of an iron stake and concrete stone. No evidence of the iron stake or concrete stone were found in the excavation, only found a couple of field stones. The bottom of the excavation was scanned with an electronic metal detector but no metal attraction was obtained. The center of the excavation was on the center line of an east-west road and in line with a fence south and was found to be 1320 feet west of the north quarter corner of Section 17.

Analysis of the above information led the DNR Division of Lands and Minerals to conclude that the 1 inch square iron marks the location of the corner. A  $\frac{3}{4}$  inch by 12 inch rebar with a plastic cap stamped "MN DNR LS 17003" was set over the found 1 inch square iron as shown on the sketch of reference ties.